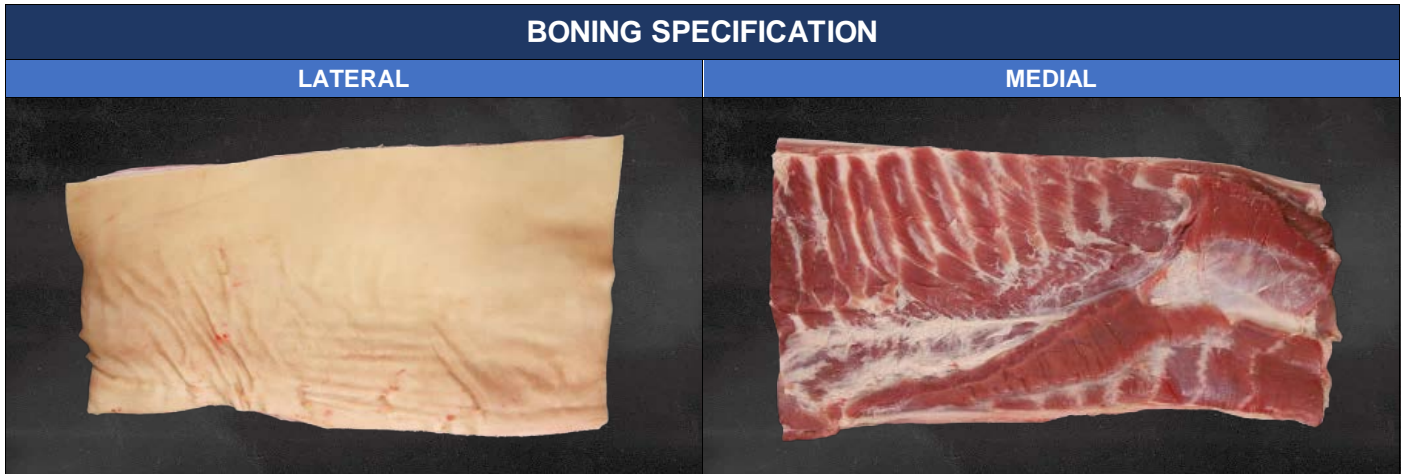


Code	343500J0
Description	Belly Boneless Rind On



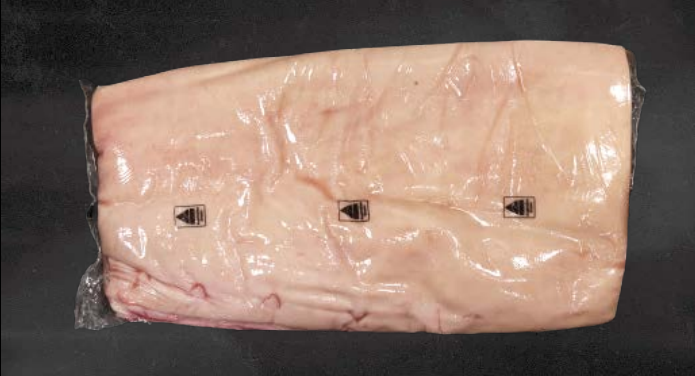

CARCASE	SPECIFICATION POINTS	<ul style="list-style-type: none"> Grade: 3, 4, 5, 6 P2 fat depth: > 0 mm Carcase weight: Any weight
	DEFECTS	<ul style="list-style-type: none"> Carcase hair Blood clot/bruise Foreign material (grease, rail dust, plastic, metal etc.) Zero tolerance defects (faeces, abscesses, ingesta etc.)

CUTTING FURTHER PROCESSING	PROCESS STEPS	<ul style="list-style-type: none"> Cut square between 4th-5th thoracic and 5th-6th lumbar vertebrae Remove sternum bone and soft bones (if required) Remove chine bones Fleece ribs Remove feather bones Remove belly from middle by a cut parallel to the dorsal edge, measured at a specified distance from the ventral edge of the eye of loin Square ends Retain teats
	SPECIFICATION POINTS	<ul style="list-style-type: none"> Fat depth: < 14 mm
	DEFECTS	<ul style="list-style-type: none"> Rind damaged Incorrect fat depth Bone chips and cartilage Foreign material (grease, rail dust, plastic, metal etc.)



Document Name	Document Code	Version Number	Written/Revised By	Reviewed By	Authorised By
Product Specification 343500J0	WP.QA.SPEC.007	1.0	Stephanie Po-Myat Thomas Ng	Scott Noon Matt Troy	Tom Stewart

Code	343500J0
Description	Belly Boneless Rind On

PACKING SPECIFICATION	
LATERAL	MEDIAL
	

KEY SPECIFICATION POINTS		
PRIMARY PACKAGING	SECONDARY PACKAGING	PACKING FORMAT
		

BAGGING	SPECIFICATION POINTS	<ul style="list-style-type: none"> • Bagging format: 1 piece/bag
	DEFECTS	<ul style="list-style-type: none"> • Incorrect or damaged packaging • Leaking vacuum • Poor or loose shrink (pack not tight)

PACKING	SPECIFICATION POINTS	<ul style="list-style-type: none"> • Packing format: 4 packs/carton • Carton weight: > 14.00 kg
	DEFECTS	<ul style="list-style-type: none"> • Incorrect or damaged packaging or label • Label not aligned on carton • Mixed product

ADDITIONAL REQUIREMENTS		
BILL OF MATERIALS	LABELLING	MICROBIOLOGICAL
6001492 CARTON STACK FLOW BASE 173MM NEW (QTY:1) 6001055 LID BEC STACK FLOW (QTY:1) 6003262 FILM FLOW WRAP 850MM 50UM CLR COOL (QTY:4) 6001353 LABEL WP CARTON 70X148 (EXT ADHESIVE) (QTY:1)	EAN: N/A TUN: N/A Claims: N/A Allergens: N/A Country of Origin: N/A Label Format: 28 (NSW) Price: N/A Max. Shelf Life: 25 days Min. Life on Receipt: N/A	Standard Plate Count: < 100,000 cfu/g E. coli: < 100 cfu/g Coliforms: < 1,000 cfu/g Salmonella: < 0 cfu/25 g Enterobacteriaceae: < 10,000 cfu/g Yeast: N/A Mould: N/A Bacillus Cereus: N/A

Document Name	Document Code	Version Number	Written/Revised By	Reviewed By	Authorised By
Product Specification 343500J0	WP.QA.SPEC.007	1.0	Stephanie Po-Myat Thomas Ng	Scott Noon Matt Troy	Tom Stewart